



No 5

## BEEHIVE VEST

Vest in beehive pattern

Instruction: Olaug Beate Bjelland

**Sizes:**

(2) 4 (6) 8 (10) 12 yrs

**Measurements:**

Chest width: (64) 70 (70) 77 (83) 83 cm

Length: (36) 40 (44) 48 (50) 52 cm

All measurements are for the finished garment = personal body measurements + movement allowance. The measurements are all according to given tension

**Yarn:**SISU (80 % wool, 20 % nylon,  
50 g = 175 m)**Alternative yarn:**MINI ALPAKKA, MANDARIN PETIT,  
ALPAKKA SILKE, TYNN  
MERINOULL, BABYULL LANETT

Note: If alternative yarn is chosen be sure to check the yardage on label. The image of garment might change by using alternative yarn

**Yarn required:**

Green #7562: (3) 3 (4) 4 (5) 5 balls

**Suggested knitting needles:**Circular and double pointed 2.5 mm  
and 3 mm

Needle sizes are only suggestions. If your knitting shows tighter tension, use thicker needles, for looser tension use thinner needle.

**Tension:**

25 sts pattern with 3 mm ndls = 10 cm

**Back and front:**With 2.5 mm circular ndl cast on (176)  
192 (192) 208 (224) 224 sts. Join and  
work (2½) 3 (3) 3½ (4) 4 cm ribbing  
k2, p2 in rnds.Change to 3 mm circular, k 1 rnd  
**while** dec evenly spaced to (160) 176  
(176) 192 (208) 208 sts.Cont **diagram** in rounds. Insert  
marker on the first 2 sts of rnd (= p  
sts), and a marker on 2 p sts at other  
side = (78) 86 (86) 94 (102) 102 sts  
between markers.Cont until garment meas approx (24)  
27 (30) 33 (34) 35 cm.Cast off 16 sts at each side (= marked  
sts + 7 sts at each side).

Work each side separately.

**Back:**

= (64) 72 (72) 80 (88) 88 sts.

Cont **diagram** back and forth, **at the  
same time** cast off for armholes at  
beg of every row 3 sts (0)0(0)1(1)1  
time, 2 sts (1)1(1)0(1)1 time, 1 st  
(1)2(2)2(1)1 time = (3) 4 (4) 5 (6) 6 sts  
cast off at each side = (58) 64 (64) 70  
(76) 76 sts on row.Cont until garment meas (34) 38 (42)  
46 (48) 50 cm.Cast off the (24) 26 (26) 28 (30) 30  
center sts for neck, and work each  
side separately.Cast off at neck on alt rows 3 sts  
once, 2 sts once, 1 st once.Cont until garment meas (36) 40 (44)  
48 (50) 52 cm.Cast off rem (11) 13 (13) 15 (17) 17  
shoulder sts.Work other side the same but in a  
mirror image.**Front:**

= (64) 72 (72) 80 (88) 88 sts.

Cast off for armholes in same manner  
as the back and cont until garment  
meas (31) 35 (38) 42 (43) 45 cm.Cast off the (14) 16 (16) 18 (20) 20  
center sts for neck, and work each  
side separately.Cast off at neck on alt rows 4 sts  
once, 3 sts once, 2 sts once, 1 st  
twice.Cont until garment meas (36) 40 (44)  
48 (50) 52 cm.Cast off rem (11) 13 (13) 15 (17) 17  
shoulder sts.Work other side the same but in a  
mirror image.**Finishing:**

Sew shoulder seams.

**Neckband:**With 2.5 mm double pointed ndls knit  
up approx 13 sts per 5 cm until  
approx (108) 112 (112) 120 (128) 128  
sts.

Number of sts a multiple of 4.

Join and work 2 cm ribbing k2, p2 in  
rnds.

Cast off loosely rib-wise.

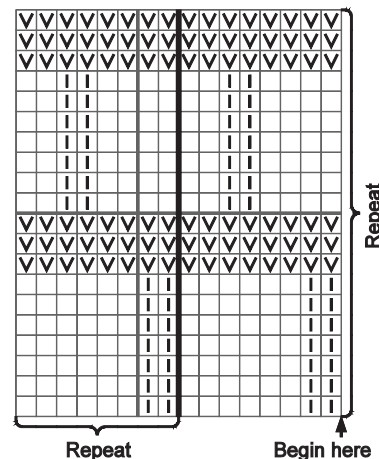
**Armhole band:**With 2.5 mm double pointed ndls knit  
up approx 13 sts per 5 cm (= approx 1  
st every other row/rnd) until approx  
(76) 80 (88) 92 (100) 108 sts.

Number of sts a multiple of 4.

Work approx 1½ cm ribbing k2, p2 in  
rnds.

Cast off loosely rib-wise.

Work the same on other side.

☐ k on RS, p on WS☒ p on RS, k on WS☐ From RS of work:

sl 2 sts p-wise off ndl,

with yarn in back of work

From WS of work:

sl 2 sts p-wise off ndl,

with yarn in front of work



