



No 12

TRACTOR SWEATER

Sweater w/round yoke
Instruction: Sandnes Garn

Sizes:

(2) 4 (6) 8 (10) yrs

Measurements:

Chest width: (63) 67 (70) 77 (80) cm

Length: (36) 40 (44) 48 (52) cm

Sleeve length: (25) 29 (31) 35 (38) cm, or suitable length

All measurements are for the finished garment = personal body measurements + movement allowance. The measurements are all according to given tension

Yarn:

SISU (80 % wool, 20 % nylon,
50 g = 175 m)

Alternative yarn:

MINI ALPAKKA, MANDARIN PETIT,
ALPAKKA SILKE, TYNN
MERINOULL, BABYULL LANETT

Note: If alternative yarn is chosen be sure to check the yardage on label. The image of garment might change by using alternative yarn

Yarn required:

Yellow sand #2134: (3) 4 (4) 5 (5) balls

Blue #6027: 1 ball all sizes

Dusty petrol #7212: 1 ball all sizes

Suggested knitting needles:

Circular and double pointed 2.5 mm and 3 mm

Needle sizes are only suggestions. If your knitting shows tighter tension, use thicker needles, for looser tension use thinner needle.

Tension:

27 sts St-st with 3 mm ndls = 10 cm

Back and front:

With yellow sand and 2.5 mm circular ndl cast on (172) 180 (192) 208 (216) sts. Join and work (4) 4 (5) 5 (6) cm ribbing k2, p2 in rnds.

Change to 3 mm circular. Cont St-st, **while** on first rnd adjust number of sts to (171) 180 (189) 207 (216).

Cont St-st until garment meas (20) 23 (26) 29 (32) cm

Insert marker at each side with (86) 90 (95) 104 (108) sts for front and

(85) 90 (94) 103 (108) sts for the back.

Work diagram **A**, and beg at front by arrow for chosen size as shown.

On next rnd cast off (8) 10 (10) 12 (12) sts at each side for armholes (= (4) 5 (5) 6 (6) sts at each side of markers).

Put garment aside and work sleeves.

Sleeves:

With yellow sand and 2.5 double pointed ndls cast on (44) 48 (48) 52 (52) sts. Join and work (4) 4 (5) 5 (6) cm ribbing k2, p2 in rnds.

Insert marker on first st of rnd (= center underarm).

Change to 3 mm double pointed and cont St-st, **at the same time** inc 1 st at each side of marker every (3,5) 3 (3) 2,5 (3) cm until (54) 64 (64) 72 (72) sts on rnd.

Cont until sleeve meas (23) 27 (29) 33 (36) cm, or 2 cm before suitable length.

Adjust number of sts to (54) 63 (63) 72 (72) and work diagram **A**. Beg at arrow as shown.

Cast off (8) 10 (10) 12 (12) center underarm sts.

Put aside and work other sleeve the same.

Yoke:

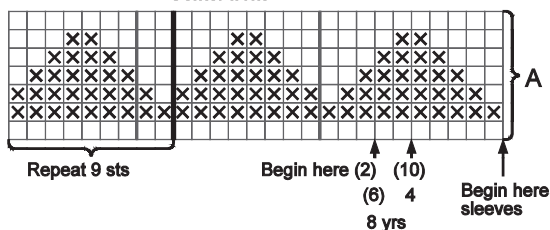
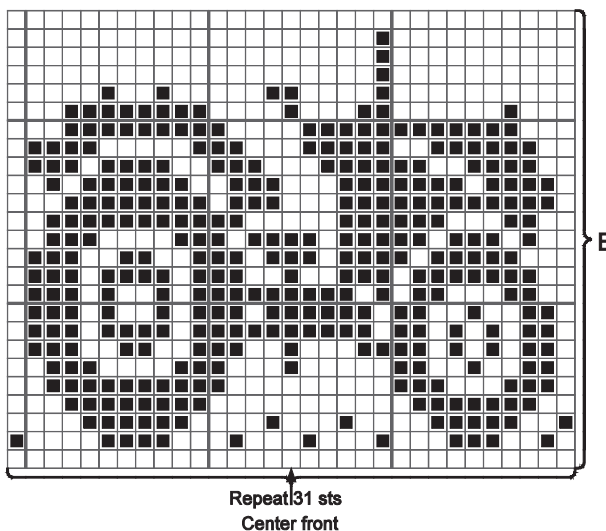
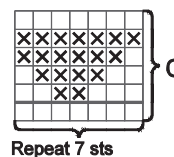
Transfer sleeve sts to the circular 3 mm garment ndl, placing one sleeve above each armhole cast-off = (247) 266 (275) 303 (312) sts.

Rnd beg at a junction on the back.

Work (2) 4 (4) 8 (8) rnds St-st, **while** on last rnd adjust number of sts to (248) 248 (279) 279 (310).

Work diagram **B**, count from center front to establish beg of pattern.

□ Yellow sand
■ Blue
✕ Dusty petrol



Dec as follows on next rnd:

k (6) 6 (7) 7 (8) sts, k2tog, rep from *-* in the rnd = (217) 217 (248) 248 (279) sts.

(6) 8 (10) yrs:

Work 3 rnds without dec.

k (6) 6 (7) sts, k2tog, rep from *-* in the rnd = (217) 217 (248) sts.

(10) yrs:

Work 3 rnds without dec.

k (6) sts, k2tog, rep from *-* in the rnd = (217) sts.

All sizes: = 217 sts.

Work diagram **C**.

Dec on next rnd as follows:

k 5 sts, k2tog, rep from *-* in the rnd = 186 sts.

Rep dec every (4th) 4th (6th) 6th (6th) rnd, but with 1 st less between dec on every rnd of dec (2) 2 (1) 1 (1) times more = (124) 124 (155) 155 (155) sts on rnd.

Cont St-st (3) 3 (5) 5 (5) rnds, **while** on last rnd dec (20) 16 (43) 39 (35) sts evenly spaced = (104) 108 (112) 116 (120) sts.

Finishing:

Sew underarm openings.

Neckband:

Change to 2.5 mm small circular ndl and work approx (5) 5 (6) 6 (7) cm ribbing k2, p2.

Cast off loosely rib-wise.

