



No 2

CLOVER SWEATER

Sweater w/eyelet pattern

Instruction: Åsa Christiansen

Sizes:

(XS) S (M) L (XL)

Measurements:

Bust: (92) 98 (105) 111 (117) cm

Length: approx (55) 56 (56) 57 (57) cm

Sleeve length: 47 cm, or suitable length

All measurements are for the finished garment = personal body measurements + movement allowance. The measurements are all according to given tension

Yarn:

ALPAKKA SILKE (70 % baby alpaca, 30 % mulberry silk, 50 g = 200 m)

Alternative yarns:

MINI ALPAKKA, MANDARIN PETIT, SISU, TYNN MERINOULL, BABYULL LANETT

Note: If alternative yarn is chosen be sure to check the yardage on label. The image of garment might change by using alternative yarn

Yarn required:

Sand #2521: (5) 6 (6) 7 (8) balls

Suggested knitting needles:

Circular and double pointed 2.5 mm and 3 mm

Needle sizes are only suggestions. If your knitting shows tighter tension, use thicker needles, for looser tension use thinner needle.

Tension:

26 sts diagram with 3 mm ndls = 10 cm

Back and front:

With 2.5 mm circular ndl cast on (266) 284 (302) 318 (336) sts. Join and work 3 cm ribbing k1, p1 in rnds.

Change to 3 mm circular, k 1 rnd **while** dec (26) 28 (30) 30 (32) sts evenly spaced = (240) 256 (272) 288 (304) sts.

Insert marker on 1 st at each side with (119) 127 (135) 143 (151) sts between markers.

Cont **diagram** until garment meas approx (37) 37 (36) 35 (34) cm.

Cast off 13 sts at each side for armholes on row marked by arrow in **diagram** (= marked sts + 6 sts at each side).
Put garment aside and work sleeves.

Sleeves:

With 2.5 mm double pointed ndls cast on (60) 60 (62) 62 (64) sts. Join and work 6 cm ribbing k1, p1 in rnds.

Change to 3 mm double pointed, k 1 rnd, **while** inc (20) 20 (26) 26 (32) sts evenly spaced = (80) 80 (88) 88 (96) sts.

Insert marker on first st.

Cont **diagram** until sleeve meas approx 47 cm, or suitable length.

Cast off 13 sts for armhole at center underarm on row marked by arrow in **diagram** (marked st + 6 sts at each side).

Put aside and work other sleeve the same.

Raglan:

Transfer sleeve sts to the circular 3 mm garment ndl, placing one sleeve above each armhole cast-off, **at the same time** k2tog at each junction and insert markers on these sts = 4 markers = (344) 360 (392) 408 (440) sts on rnd.

Adjust pattern and cont **diagram**, **at the same time** dec for raglan at each marker as follows: work until 1 st before marked st, sl 2 sts k-wise (as working k2tog), k1, psso = 8 sts dec.

Rep raglan dec on alt rnds a total of (24) 26 (28) 30 (32) times = (152) 152 (168) 168 (184) sts.

Cast off the (17) 21 (25) 21 (27) center front sts for neck. Work to end of rnd, cut yarn and beg again at neck.

Cont back and forth and dec for raglan, **at the same time** cast off 2 sts at beg of every row (7) 7 (7) 8 (8) times at each side.

Leave sts on ndl for neckband.

Finishing:

Sew underarm openings.

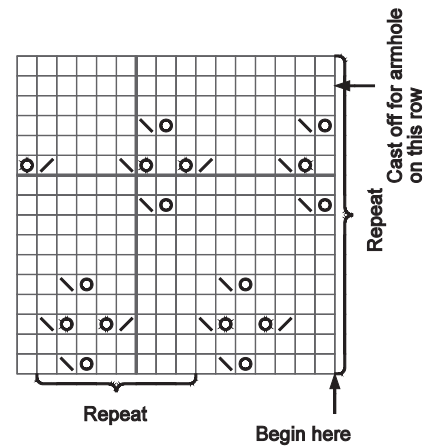
Neckband:

Transfer sts at neck to 2.5 circular ndl and knit up sts at neck edge, 1 st every st/row, but skip every 4th st/row. Adjust number of sts to approx (100) 104 (108) 112 (116).

Number of sts a multiple of 2.

Work 3 cm ribbing k1, p1 in rnds.

Cast off rib-wise.



- ☐ k on RS, p on WS
- ☒ 1 yo
- ☒ sl 1, k1, psso
- ☒ k2tog

