



No 8

ANNA
CARDIGAN*Cardigan w/round yoke*
*Instruction: Sandnes Garn***Sizes:**

(XS) S (M) L (XL) XXL-XXXL

Measurements:Bust: approx (86) 93 (100) 106 (112)
123 cmLength: approx (58) 59 (60) 62 (63)
64 cmSleeve length: 47 cm, or suitable
lengthAll measurements are for the finished garment
= personal body measurements + movement
allowance. The measurements are all according
to given tension.**Yarn:**SISU (80 % wool, 20 % nylon, 50 g =
175 m)**Alternative yarn:**MINI ALPAKKA, MANDARIN PETIT,
ALPAKKA SILKE, TYNN
MERINOULL, BABYULL LANETT,
TYNN ALPAKKA ULLNote: If alternative yarn is chosen be sure to
check the yardage on label. The image of
garment might change by using alternative yarn**Yarn required:**Lt.grey melange #1032: (5) 6 (6) 7 (7)
8 ballsGrey-blue #5962: (3) 3 (3) 3 (4) 4
balls

Wine melange #4363: 1 ball all sizes

Blue melange #6324: 1 ball all sizes

Notions:

(8) 8 (9) 9 (10) 10 buttons

Suggested knitting needles:Circular and double pointed 2.5 mm
and 3 mmNeedle sizes are only suggestions. If your
knitting shows tighter tension, use thicker
needles, for looser tension use thinner needle.**Tension:**

27 sts St-st with 3 mm ndls = 10 cm

Back and front:With grey-blue and 2.5 mm circular
ndl cast on (241) 261 (281) 297 (313)
341 sts and work 6 cm ribbing backand forth as follows: (first row = WS) 1
edge st, p1, *k1, p1*, rep from *-* end
with 1 edge st, **at the same time** after
3 cm work 1 buttonhole on right side
front as follows.**Buttonhole:** Cast off 2 sts inside 4 sts.
Next row: Cast on 2 sts over the
cast-off.Transfer the first 10 sts at each side
for front bands to spare ndl. These
are worked later.

Change to 3 mm circular ndl.

Cast on 5 new sts at end of row =
cutting sts. These sts are not included
in pattern or given number of sts. Join
and work 1 rnd St-st.Insert marker at each side with (111)
121 (131) 139 (147) 161 for the back
and (55) 60 (65) 69 (73) 80 sts for
each front.Cont St-st in rnds and work diagram
A, cont with diagram **B** until garment
meas approx (38) 39 (39) 41 (41) 41
cm, end with a full or half pattern
repeat, **at the same time** cast off (8)
10 (12) 12 (12) 12 sts at each side for
armholes (= (4) 5 (6) 6 (6) 6 sts at
each side of markers). Put garment
aside and work sleeves**Sleeves:**With grey-blue and 2.5 mm double
pointed ndls cast on (56) 56 (60) 60
(64) 64 sts. Join and work 6 cm
ribbing k1, p1 in rnds.Change to 3 mm double pointed ndls,
k 1 rnd **while** inc evenly spaced to
(60) 60 (64) 64 (68) 72 sts.Insert marker on first and last st on
rnd.Cont diagram **A** and when sleeve
meas 8 cm inc 1 st at each side of
marker. Inc: pick up yarn between 2
sts and k tbl this new st.Rep inc every (3) 2 (2) 2 (2) 1,5. cm
and cont diagram **B** until full length,
and make sure diagram B is matching
diagram A. Work new sts in pattern as
they arise. Rep inc until (86) 92 (98)
102 (106) 116 sts on rnd.Cont until sleeve meas 47 cm, or
suitable length, end with the same
pattern rnd as back and front, **while**
on last rnd cast off (8) 10 (12) 12 (12)
12 middle underarm sts.Put aside and work other sleeve the
same.**Round yoke:**Transfer sleeve sts to the circular 3
mm garment ndl, placing one sleeve
above each armhole cast-off = (361)
385 (409) 433 (457) 505 sts.Work (0) 0 (4) 4 (8) 10 rnds St.st.
Cont diagram **C** and dec as shown =
(121) 129 (137) 145 (153) 169 sts.Work extra height at back using
"German short rows" as follows:Work (91) 97 (103) 109 (115) 123 sts,
turn, sl first st with yarn in front of
work, lead yarn over right ndl and pull
firmly at the back until 2 loops on right
ndl, work (60) 64 (68) 72 (76) 76 sts,
turn, sl first st with yarn in front of
work, lead yarn over right ndl and pull
firmly at the back until 2 loops on right
ndl.Turn, and work until 10 sts before
previous turning once more at each
side. After last turning work to end of
row and work loops tog.Work one row over all sts, **while** dec
evenly spaced to (103) 105 (107) 109
(111) 117 sts, and work loops tog at
the other side.Cast off the 5 cutting sts and transfer
rem sts to spare ndl.**Finishing:**With machine sew 2 seams at each
side of center front on cutting sts and
cut between.

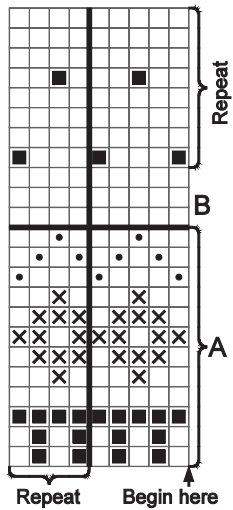
Zigzag over cut edges.

Left front band:Transfer sts from spare ndl to 2.5 mm
ndl, **at the same time** with grey-blue
cast on 5 new sts for facing at front
edge side, and work these sts k on
RS, p on WS.Work sts for front band in ribbing as
before and facing as explained until
band reaches beg of neck when
slightly stretched.Cast off sts for facing, and transfer
rem 10 sts to spare ndl for neckband.**Right front band:**Work as left band but with (8) 8 (9) 9
(10) 10 buttonholes evenly spaced.The upper at center of neckband, the
lower is already finished**Neckband:**Transfer (123) 125 (127) 129 (131)
137 sts to 2.5 mm circular ndl and
with grey-blue work 3 cm ribbing as
back and front. Remember last
buttonhole.

Cast off rib-wise.

Sew front bands to front edges. Fold
facings over cut edges and sew with
hidden sts.

Sew buttons on.



- ☐ Lt.grey melange
- ☒ Grey-blue
- ☒ Wine melange
- ☒ Blue melange

