



No 8

# NORTH

Cardigan for men

Instruction: Sandnes Garn

## Sizes:

(XS) S (M) L (XL) XXL (XXXL)

## Measurements:

Chest: (96) 102 (112) 119 (127) 132 (136) cm

Length: approx (68) 70 (71) 72 (73) 74 (75) cm

Sleeve length: 55 cm, or suitable length

All measurements are for the finished garment = personal body measurements + movement allowance. The measurements are all according to given tension

## Yarn:

PEER GYNT (100 % Norwegian wool, 50 g = 91 m)

## Alternative yarn:

ALPAKKA, SMART, DUO, MANDARIN, MEDI, MERINOULL, SPØT

Note: If alternative yarn is chosen be sure to check the yardage on label. The image of garment might change by using alternative yarn.

## Yarn required:

Autumn #3062: (12) 13 (15) 16 (17) 18 (19) balls

Burnt ochre #2544: 1 ball all sizes

Lt.beige melange #3021: 1 ball all sizes

## Notions:

(8) 8 (9) 9 (10) 10 (10) buttons

## Suggested knitting needles:

Circular and double pointed 3.5 mm and 4 mm

Needle sizes are only suggestions. If your knitting shows tighter tension, use thicker needles, for looser tension use thinner needle.

## Tension:

20 sts St-st with 4 mm ndls = 10 cm

## Back and front:

With autumn and 3.5 mm circ ndl cast on (183) 195 (215) 229 (245) 255 (263) sts and work 5 cm ribbing back and forth as follows:

(1st row = WS) 1 edge st, p1, \*k1, p1\*, rep from \*-\* end with 1 edge st.

Change to 4 mm circ ndl, and cast on 5 new sts at end of row (= cutting sts. These sts are not included in pattern or given number of sts).

Insert marker at sides with (45) 48 (53) 56 (60) 63 (65) sts for each front and (93) 99 (109) 117 (125) 129 (133) sts for the back.

Cont St-st and when garment meas (46) 48 (48) 49 (50) 50 (51) cm cast off (8) 8 (10) 10 (10) 10 (10) sts at each side for armholes (= (4) 4 (5) 5 (5) 5 (5) sts at each side of markers). Put garment aside and work sleeves.

## Sleeves:

With autumn and 3.5 mm double pointed ndls cast on (42) 42 (44) 46 (46) 48 (50) sts. Join and work 5 cm ribbing k1, p1 in rnds.

Insert marker on first and last st of rnd.

Change to 4 mm double pointed ndls. Cont St-st and inc 1 st at each side of marker.

Rep inc approx every 2 cm until (84) 84 (88) 90 (92) 94 (96) sts on rnd.

Cont until sleeve meas 55 cm, or suitable length.

Cast off (8) 8 (10) 10 (10) 10 (10) sts at center underarm (= marked sts + (3) 3 (4) 4 (4) 4 (4) sts at each side of

marker).

Put aside and work other sleeve the same.

## Yoke:

Transfer sleeve sts to the circular 4 mm garment ndl, placing one sleeve above each armhole cast-off = (319) 331 (351) 369 (389) 403 (415) sts.

Insert marker at each junction and dec for raglan as follows: Before each marker: sl 1, k1, psso. After marker: k2tog = 8 sts dec.

Rep dec on alt rnds (12) 12 (13) 13 (14) 15 (15) times = (223) 235 (247) 265 (277) 283 (295) sts.

Work **diagram** and dec as shown = (103) 107 (111) 115 (119) 123 (127) sts.

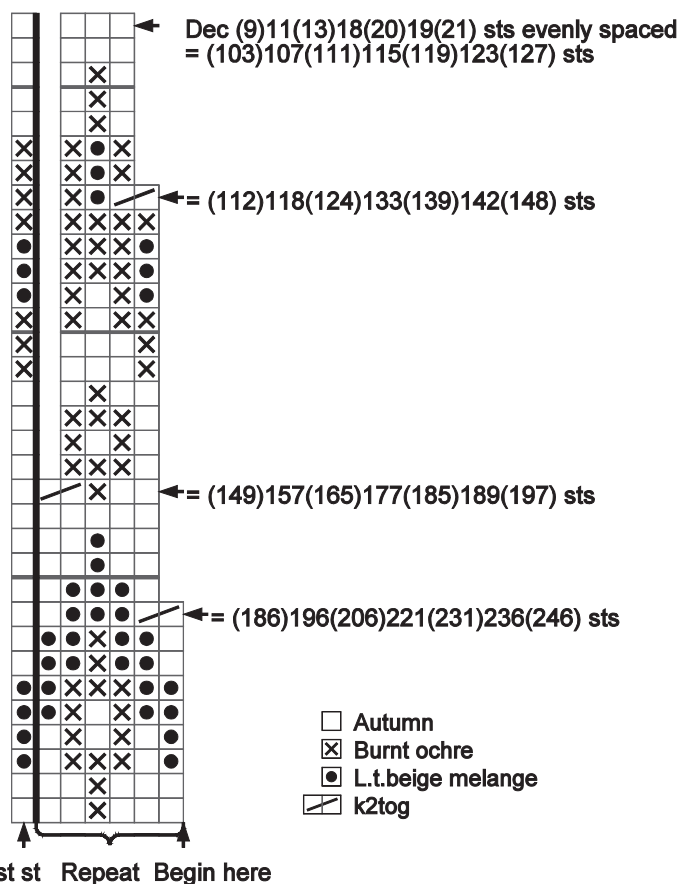
Cast off cutting sts at front and leave rem sts on ndl for neckband.

## Finishing:

With machine sew 2 seams at each side of center front on cutting sts, and cut between seams.

Zigzag over cut edges.

**TIPS:** Work front bands and facings before cutting at center front.



**Right front band:**

With autumn and 3.5 mm circ ndl pick up and knit 1 st every st/row, but skip every 4th st/row to approx (133) 137 (139) 141 (143) 145 (147) sts at front edge.

Number of sts a multiple of 2+1.

Work 4 cm ribbing back and forth as for garment.

Cast off rib-wise.

**Left front band:**

Work as the other front band but with (8) 8 (9) 9 (10) 10 (10) buttonholes evenly spaced after 2 cm.

The lower approx 2 cm from edge, the upper at neckband. This is done later.

Buttonhole: Cast off 2 sts. Next row: cast on 2 sts above the cast-off.

**Facing:**

From WS, with autumn and 3.5 mm circ ndl knit up 1 st every st on first row of front band. Work 5 rows St-st back and forth.

Cast off.

Fold facing over cut edge and sew with hidden sts.

**Neckband:**

Transfer sts at neck to 3.5 mm circ ndl, and with autumn knit up 8 sts over each front band = (119) 123 (127) 131 (135) 139 (143) sts.

Work 4 cm ribbing back and forth as for garment.

Remember last buttonhole.

Cast off rib-wise.

Sew underarm openings. Sew buttons on



