



No 9

# NORTH

Ladies cardigan

Instruction: Sandnes Garn

## Sizes:

(XS) S (M) L (XL) XXL (XXXL)

## Measurements:

Bust: (91) 96 (102) 111 (118) 127 (132) cm

Length: approx (54) 56 (58) 60 (61) 62 (63) cm

Sleeve length: 47 cm, or suitable length

All measurements are for the finished garment = personal body measurements + movement allowance. The measurements are all according to given tension

## Yarn:

PEER GYNT (100 % Norwegian wool, 50 g = 91 m)

## Alternative yarn:

ALPAKKA, SMART, DUO, MANDARIN MEDI, MERINOULL, SPØT

Note: If alternative yarn is chosen be sure to check the yardage on label. The image of garment might change by using alternative

## Yarn required:

Purple #5043: (10) 11 (12) 13 (14) 15 (16) balls

Autumn #3062: 1 ball all sizes

Golden nude #3522: 1 ball all sizes

## Notions:

(8) 8 (8) 9 (9) 10 (10) buttons

## Suggested knitting needles:

Circular and double pointed 3.5 mm and 4 mm

Needle sizes are only suggestions. If your knitting shows tighter tension, use thicker needles, for looser tension use thinner needle.

## Tension:

20 sts St-st with 4 mm ndls = 10 cm

## Edge st: k every row

## Back and front:

With purple and 3.5 mm circ ndl cast on (173) 183 (195) 213 (227) 245 (255) sts and work 5 cm ribbing back and forth as follows:

(1st row = WS) 1 edge st, p1, \*k1, p1\*, rep from \*-\* end with 1 edge st.

Change to 4 mm circ ndl, and cast on 5 new sts at end of row (= cutting sts. These sts are not included in pattern or given number of sts).

Insert marker at sides with (42) 45 (48) 52 (56) 60 (63) sts for each front and (89) 93 (99) 109 (115) 125 (129) sts for the back.

Cont St-st and when work meas approx (37) 37 (38) 39 (39) 40 (40) cm cast off (8) 8 (8) 8 (8) 10 (10) sts at each side for armholes (= (4) 4 (4) 4 (4) 5 (5) sts at each side of markers).

Put garment aside and work sleeves.

## Sleeves:

With purple and 3.5 mm double pointed ndls cast on (38) 38 (40) 40 (42) 42 (44) sts. Join and work 5 cm ribbing k1, p1 in rnds.

Insert marker on first and last st on rnd.

Change to 4 mm double pointed ndls, k 1 rnd and inc 1 st at each side of marker. Cont St-st and rep inc approx. every (3) 2½ (2½) 2 (2) 2 (2) cm until (62) 68 (72) 74 (80) 84 (86) sts on rnd.

Cont until sleeve meas 47 cm, or suitable length.

Cast off (8) 8 (8) 8 (8) 10 (10) center underarm sts (= marked sts + (3) 3 (3) 3 (3) 4 (4) sts at each side).

Put aside and work other sleeve the same.

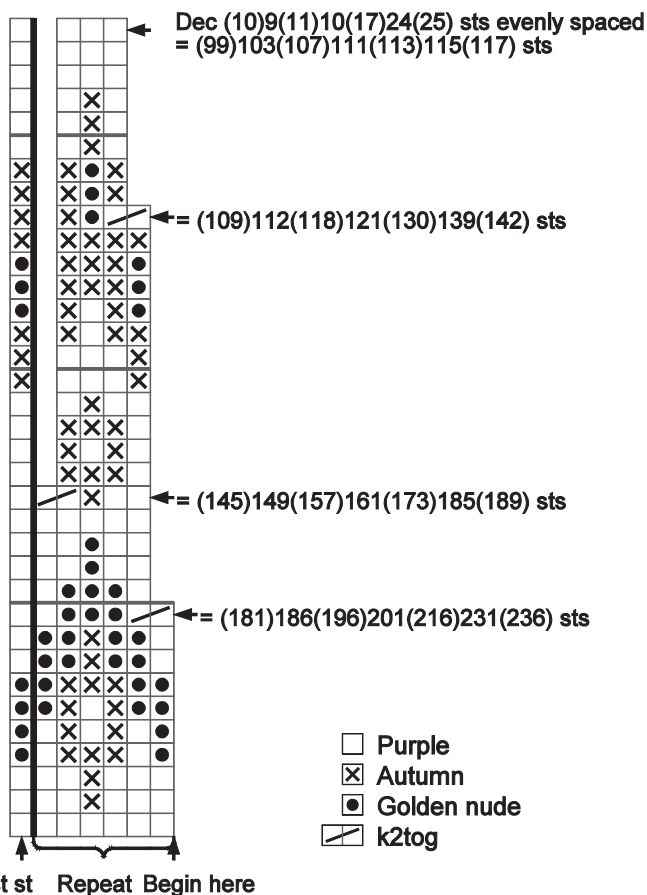
## Yoke:

Transfer sleeve sts to the circular 4 mm garment ndl, placing one sleeve above each armhole cast-off = (265) 287 (307) 329 (355) 373 (387) sts.

Insert marker at each junction, and dec for raglan at each marker as follows: Before each marker: sl1, k1, pssso. After marker: k2tog = 8 sts dec. Rep dec on alt rnds (6) 8 (9) 11 (12) 12 (13) times = (217) 223 (235) 241 (259) 277 (283) sts.

Work **diagram** and dec as shown = (99) 103 (107) 111 (113) 115 (117) sts.

Cast off cutting sts at front and leave rem sts on ndl for neckband.



**Finishing:**

With machine sew 2 seams at each side of center front on cutting sts, and cut between seams.

Zigzag over cut edges.

**TIPS:** Work front bands and facings before cutting at center front.

**Left front band:**

With purple and 3.5 mm circ ndl pick up and knit 1 st every st/row, but skip every 4th st/ row at front edge to approx (115) 117 (119) 121 (123) 125 (127) sts.

Number of sts a multiple of 2+1.

Work 4 cm ribbing back and forth as for back and front.

Cast off rib-wise.

**Right front band:**

Work in the same manner as other front band but with (8) 8 (8) 9 (9) 10 (10) buttonholes evenly spaced after 2 cm.

The lower approx 2 cm from cast on edge, the upper at neckband. This is done later.

Buttonhole: Cast off 2 sts. Next row: cast on 2 sts above the cast-off.

**Facing:**

From WS, with purple and 3.5 mm circ ndl knit up 1 st every st on first row of front band.

Work 5 rows St-st back and forth.

Cast off.

Fold facing over cut edge and sew with hidden sts.

Work the same on other side

**Neckband:**

Transfer sts at neck to 3.5 mm circ ndl and with purple knit up sts at edge and 8 sts at each front band to = (115) 119 (123) 127 (129) 131 (133) sts.

Work 4 cm ribbing back and forth as for garment.

Remember last buttonhole.

Cast off rib-wise.

Sew underarm openings.

Sew buttons on.



