

iiS 3_3 BURSFIJELL SWEATER



SAN DINES GARN

X

iiS WOODLING

BURSFJELL SWEATER

DESIGN: SIV ELISE SELAND IIS OF NORWAY / INSTRUCTION: OLAUG KLEPPE

SIZES

(XS) S (M-L) XL (XXL)

MEASUREMENTS

Bust: (95) 105 (114) 123 (132) cm
 Length: approx (52) 53 (55) 57 (58) cm
 Sleeve length: 44 cm, or suitable length
 All measurements are for the finished garment = personal body measurements + movement allowance. The measurements are all according to given tension.

YARN

FRITIDSGARN (100 % Norwegian wool.
 50 g = 70 m)

YARN REQUIRED

Dusty pastel green #9041: (5) 5 (6) 6 (7) balls
 Natural m elange #2641: (2) 3 (3) 3 (3) balls
 Golden brown #2564 (2) 2 (3) 3 (3) balls

SUGGESTED KNITTING NEEDLES

Circular and double pointed 6 mm and 7 mm
 Needle sizes are only suggestions. If your knitting shows tighter tension, use thicker needles, for looser tension use thinner needles

TENSION

13 sts and 16 rnds St-st with 7 mm ndls = 10 x 10 cm

NOTE

Ensure relaxed floats on WS to avoid tight tension at pattern sections.

BACK AND FRONT

With dusty pastel green and 6 mm circular ndl cast on (124) 136 (148) 160 (172) sts.
 Join and work 7 cm ribbing k2, p2 in rnds.
 Insert marker at sides with (62) 68 (74) 80 (86) sts each for front and back.
 Change to 7 mm circular ndl.
 Work diagram A until garment meas (17) 17 (18) 19 (19) cm.
 Cont St-st until garment meas (27) 28 (29) 31 (31) cm.
 Cast off for armholes as follows:
 Cast off the first 6 sts, work (50) 56 (62) 68 (74) sts (= back), cast off 12 sts, work (50) 56 (62) 68 (74) sts (= front), cast off rem 6 sts.
 Put garment aside and work sleeves.

SLEEVES

With golden brown and 6 mm double pointed ndls cast on (32) 32 (32) 36 (36) sts.

Join and work 7 cm ribbing k2, p2 in rnds.
 Change to 7 mm double pointed ndls.
 Insert marker around the first and last st on rnd.
 Cont diagram A.
 Inc 1 st at each side of marker.
 Rep inc every (3½) 3 (3) 3 (3) cm, at the same time when sleeve meas 12 cm work diagram B in St-st.
 Cont approx 5 cm with golden brown and St-st.
 Change to dusty pastel green, cont St-st and rep inc until (50) 52 (54) 56 (58) sts on rnd.
 Cont until sleeve meas 44 cm, or suitable length.
 Cast off the 6 first and the 6 last sts on rnd and (38) 40 (42) 44 (46) sts rem.
 Put aside and work other sleeve in the same manner.

YOKE

Transfer sleeve sts to the circular 7 mm garment ndl, placing one sleeve above

each armhole cast-off = (176) 192 (208) 224 (240) sts.
 Rnd beg at the junction by sts for the back.
 With dusty pastel green work (0) 0 (2) 3 (4) rnds St-st.
 Cont diagram C and dec as shown in diagram = (88) 96 (104) 112 (120) sts.
 When diagram is finished work 1 rnd St-st with natural m elange, while dec (20) 24 (28) 32 (36) sts evenly spaced = (68) 72 (76) 80 (84) sts.

FINISHING NECKBAND

Change to small 6 mm circular ndl and dusty pastel green, k 1 rnd then work 3 cm ribbing k2, p2 in rnds.
 Cast off k-wise
 Sew tog at underarms.

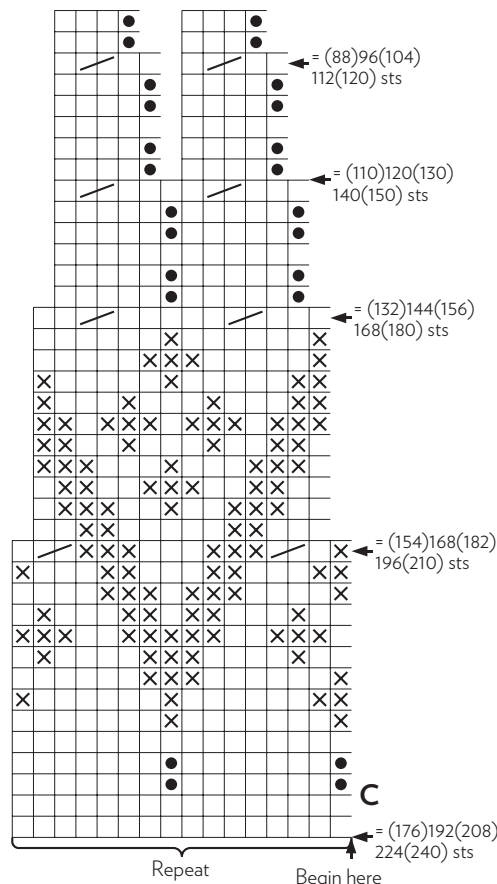


Diagram A:

- k
- p

Diagram B and C:

- Dusty pastel green
- Golden brown
- Natural m elange
- k2tog

