



No 7

ALBA SWEATER

Raglan sweater w/blackberry pattern
Instruction: Anita Brathetland

Sizes:

(S) M (L) XL (XXL)

Measurements:

Bust: (100) 108 (112) 120 (128) cm

Length: (52) 53 (56) 57 (60) cm

Sleeve length: 51 cm, or suitable length

All measurements are for the finished garment = personal body measurements + movement allowance. The measurements are all according to given tension.

Yarn:

BØRSTET ALPAKKA (96 % alpaca, 4 % nylon, 50 g = 110 m)

Yarn required:

Natural #1012: (7) 8 (9) 10 (11) balls

Suggested knitting needles:

Circular 5 mm and 6 mm

Double pointed 5 mm

Needle sizes are only suggestions. If your knitting shows tighter tension, use thicker needles, for looser tension use thinner needle

Tension:

20 sts x 20 rnds diagram and 6 mm ndls = 10 x 10 cm

NOTE: This garment is relatively short. For a longer garment work additional length before cast off for armholes.

Yoke meas approx (21) 22 (23) 24 (25) cm.

INFO: When working diagram the blackberries will be on WS.

Turn garment inside out when finished for blackberries on RS.

Back and front:

With 5 mm circular ndl cast on (200) 216 (224) 240 (256) sts. Join and work 5 cm ribbing k1, p1 in rnds.

Change to 6 mm circular ndl.

Insert marker around 1 st at each side with (99) 107 (111) 119 (127) sts between markers.

Cont **diagram** until garment meas approx (31) 31 (33) 33 (35) cm.

End with 4th rnd in diagram, **at the same time** cast off 7 sts at each side for armholes (= marked st + 3 sts at each side).

NOTE: Work diagram and **at the same time** cast off.

Put garment aside and work sleeves.

Sleeves:

With 5 mm double pointed ndls cast on (34) 36 (38) 40 (42) sts. Join and work 6 cm ribbing k1, p1 in rnds.

Change to 6 mm double pointed ndls.

Work 1 rnd St-st and inc in each st as follows: k1 and k1 tbl = (68) 72 (76) 80 (84) sts.

Insert marker around first st of rnd.

Cont **diagram** until sleeve meas 51 cm.

End with the same pattern rnd as back and front, and cast off 7 middle underarm sts (= marked st + 3 sts at each side).

Put aside and work other sleeve the same.

Raglan:

Transfer sleeve sts to the circular 6 mm garment ndl, placing one sleeve above each armhole cast-off.

Work 1 rnd **diagram** and p2tog at each junction = (304) 328 (344) 368 (392) sts and 4 markers on rnd.

P marked sts on every rnd further.

Work 13 rnds **diagram**.

Cont **diagram** and dec for raglan at each marker as follows:

Work until 2 sts before marker, k2tog, p1, k2tog tbl = 8 sts dec.

NOTE: At each raglan dec 1 blackberry is dec at each side of each marker. On following rnd 8 sts are dec because of diagram and it happens automatically by working this diagram. Read following chapter before knitting further.

Rep dec on alt rnds a total of (7) 8 (9) 10 (11) times = (200) 208 (208) 208 (224) sts.

Transfer the (15) 19 (19) 23 (27) middle front sts to spare ndl for neck.

TIPS: Transfer sts to spare ndl when working (7th) 8th (9th) 10th (11th) raglan dec. This rnd is with k sts only and will look best when neckband (ribbing) is worked later.

Work to end of rnd, cut yarn and beg again at neck.

NOTE: Work raglan dec on WS rows.

Cont raglan dec and p2tog at each side of marked sts.

Cont **diagram** back and forth and cast off 1 st at beg of every row, **at the**

same time cont raglan dec when possible 7 times more and until a total of (14) 15 (16) 17 (18) times over sts for the back.

NOTE: Work **diagram**, **at the same time** as cast off when casting off sts at neck.

Leave rem sts on ndl for neck.

Finishing:

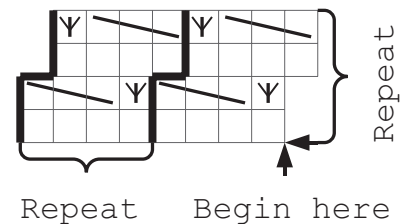
Turn garment inside out.

Transfer sts from ndl at neck to 5 mm circular ndl and knit up sts at neck edge.

Work 8 cm ribbing k1, p1 in rnds, **at the same time** adjust number of sts to (72) 74 (76) 78 (80) sts on first rnd.

Cast off rib-wise.

Fold neckband to WS and sew loosely with hidden sts.



- k on RS, p on WS
- (k1, p1, k1) in the sa
- p3tog

