

MONTHLY FREE PATTERN



BOW RIBBON

1908 SUMMER WOMAN, NO 4 / T-SHIRT W/EYELET PATTERN AND RAGLAN
INSTRUCTION: ANITA BRATHETLAND

SIZES

(S) M (L) XL (XXL) XXXL

MEASUREMENTS

Bust: (87) 94 (103) 110 (121) 127 cm
Length: approx (56) 57 (58) 59 (60) 61 cm
Sleeve length: 5 cm, or suitable length
All measurements are for the finished garment = personal body measurements + movement allowance. The measurements are all according to given tension

YARN

MANDARIN PETIT (100 % cotton,
50 g = 180 m)

ALTERNATIVE YARN

MINI ALPAKKA, SISU, ALPAKKA SILKE,
TYNN MERINOULL, BABYULL LANETT
Note: If alternative yarn is chosen be sure to check the yardage on label. The image of garment might change by using alternative yarn

YARN REQUIRED

Dusty petrol #6822: (5) 5 (6) 7 (8) 9 balls

SUGGESTED KNITTING NEEDLES

Circular 2.5 mm and 3 mm
Needle sizes are only suggestions. If your knitting shows tighter tension, use thicker needles, for looser tension use thinner needle.

TENSION

27 sts St-st with 3 mm ndls = 10 cm

BACK AND FRONT

With 2.5 mm circular ndl cast on (234) 254 (278) 298 (326) 342 sts. Join and work 3 cm ribbing k1, p1 in rnds.
Change to 3 mm circular.
Insert marker at sides with (117) 127 (139) 149 (163) 171 sts for each part.
Cont St-st until garment meas approx 38 cm.
Cast off 12 sts at each side for armholes (= 6 sts at each side of markers). Put garment aside and work sleeves.

SLEEVES

With 2.5 mm double pointed ndls cast on (80) 84 (88) 92 (96) 100 sts. Join and work 2 cm ribbing k1, p1 in rnds.
Change to 3 mm double pointed.
Work St-st until sleeve meas 5 cm, or suitable length.
Cast off 12 middle underarm sts.
Put aside and work other sleeve the same.

RAGLAN

Transfer sleeve sts to the circular 3 mm garment ndl, placing one sleeve above each armhole cast-off = (346) 374 (406) 434 (470) 494 sts.

K2tog at each junction and insert marker on each of these sts = (342) 370 (402) 430 (466) 490 sts, and 4 markers.

Beg raglan dec on next rnd as follows:

Work until 1 st before marker, sl 2

k-wise (as working k2tog), k1, psso = 8 sts dec on rnd.

Rep dec on alt rnds a total of (5) 7 (9) 11 (13)

15 times = (302) 314 (330) 342 (362) 370 sts.

Work diagram over the 51 middle front sts, at

the same time cont raglan dec as before 15

times more = (182) 194 (210) 222 (242) 250 sts.

Transfer the 19 middle front sts to spare ndl for neck.

Cut yarn and beg again at neck.

NOTE: Dec for raglan on RS-rows.

Cont diagram back and forth and cast off 2 sts at each side every row, at the same time cont raglan dec as before where possible 10 times, and to a total of (30) 32 (34) 36 (38) 40 times over sts for the back.

NOTE: Cont diagram until eyelet pattern meets raglan dec at each side.

Leave rem sts on ndl for neck.

FINISHING

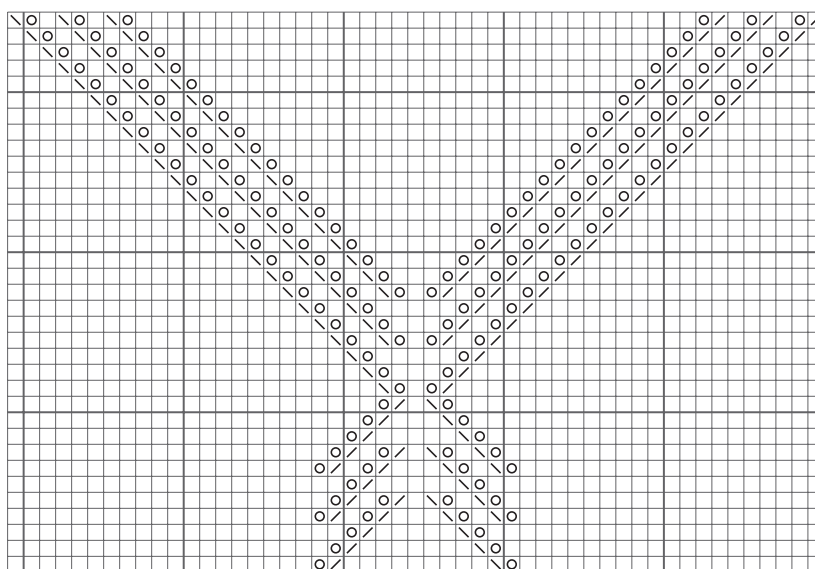
Sew underarm openings.

NECKBAND

Transfer neck sts to 2.5 mm circular ndl and knit up sts at neck. Join and work 1 rnd St-st, while adjusting number of sts to (138) 142 (146) 150 (154) 156.

Work 3 cm ribbing k1, p1 in rnds.

Cast off rib-wise.



- ☐ k on RS, p on WS
- ☒ 1 yo
- ☒ RS: k2tog on RS
WS: p2tog on WS
- ☒ RS: sl 1 k-wise, k1, psso
WS: sl 1 k-wise, sl 1 k-wise and transfer both sts back to left ndl, p2tog tbl

SADNES
GARN

