



No 2

NANCY

Sweater w/round yoke worked from neck down

Instruction: Sandnes Garn

Sizes:

(2) 4 (6) 8 (10) 12 yrs

Measurements:

Chest width: (68) 71 (74) 79 (86) 89 cm

Length: approx (38) 42 (46) 50 (52) 54 cm

Sleeve length: (25) 29 (31) 35 (38) 42 cm, or suitable length

All measurements are for the finished garment = personal body measurements + movement allowance. The measurements are all according to given tension.

Yarn:

SMART (100 % wool, superwash, 50 g = 100 m)

Alternative yarn:

PEER GYNT, ALPAKKA, DUO, MANDARIN MEDI, MERINOULL

Note: If alternative yarn is chosen be sure to check the yardage on label. The image of garment might change by using alternative yarn

Yarn required:

Lt.grey-melange #1032/Natural melange #2641: (4) 4 (5) 6 (7) 8 balls
Burnt ochre #2544/ Terracotta melange #3846: (1) 1 (1) 1 (2) 2 balls
White #1001/ Lt.sea-green #7721: (1) 1 (2) 2 (2) 2 balls
Ice blue #6531/ Old rose #4332: (1) 1 (1) 1 (1) 2 balls

Suggested knitting needles:

Circular and double pointed 3.5 mm and 4 mm

Needle sizes are only suggestions. If your knitting shows tighter tension, use thicker needles, for looser tension use thinner needle.

Tension:

20 sts St-st with 4 mm ndls = 10 cm

Beg at neck:

With Lt.grey-melange/natural melange and 3.5 mm circular ndl cast on (84) 86 (90) 94 (96) 98 sts. Join and work 3 cm ribbing k1, p1 in rnds.

Change to 4 mm circular, k 1 rnd, **while** inc (0) 4 (6) 8 (12) 16 sts evenly spaced = (84) 90 (96) 102 (108) 114 sts.

Work diagram A, and inc as shown = (196) 210 (224) 238 (252) 266 sts.

(6) 8 (10) 12 yrs:

Work diagram B.

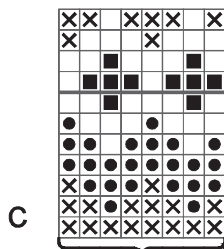
(2) 4 yrs:

Divide work as follows: Work 1 rnd diagram B, **at the same time** divide work as follows: work (60) 63 sts (= back), transfer (38) 42 sts to spare ndl (for sleeve), cast on (8) 8 new underarm sts, work (60) 63 sts (= front), transfer (38) 42 sts to spare ndl (for sleeve), cast on (8) 8 new underarm sts.

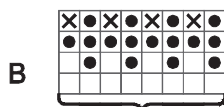
(6) 8 (10) 12 yrs:

Divide work as follows:

Change to Lt.grey-melange and work (66) 71 (76) 79 sts, transfer (46) 48 (50) 54 sts to spare ndl for sleeve, cast on (8) 8 (10) 10 new underarm sts, work (66) 71 (76) 79 sts, transfer (46) 48 (50) 54 sts to spare ndl for sleeve, cast on (8) 8 (10) 10 new underarm sts.

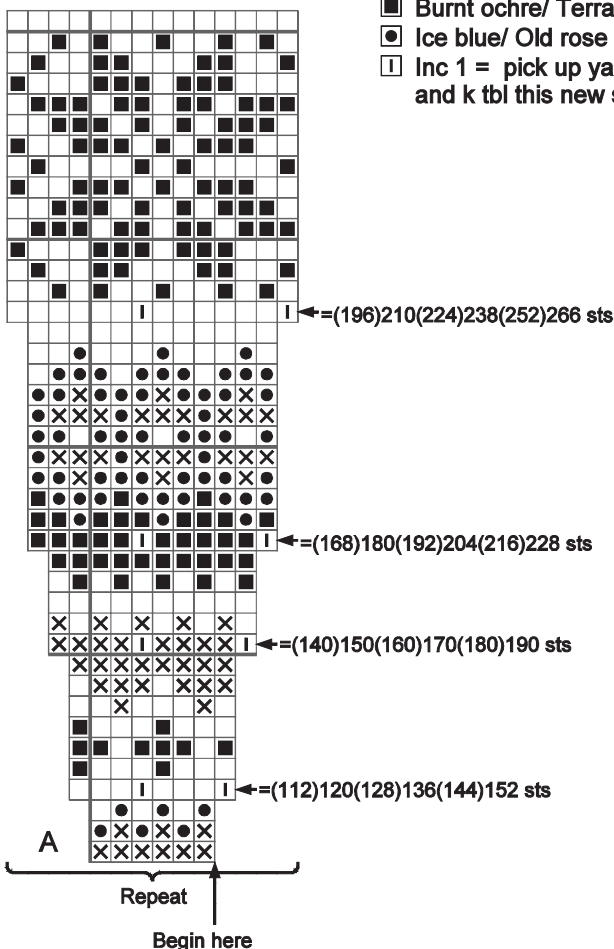


Repeat



Repeat

- ☐ White/Lt.sea green
- ☒ Lt.grey-melange/Natural mélange
- ☒ Burnt ochre/ Terracotta melange
- ☒ Ice blue/ Old rose
- ☐ Inc 1 = pick up yarn between 2 sts and k tbl this new st



Back and front:

= (136) 142 (148) 158 (172) 178 sts.

2-4 yrs:

Work diagram **B**.

All sizes:

Cont St-st in rnds with lt.grey-melange/natural melange until garment meas approx (12) 16 (19) 23 (23) 24 cm, meas from dividing rnd.

Work 1 rnd St-st, **at the same time** adjust number of sts to (136) 140 (148) 156 (172) 176.

Work diagram **C**.

Work 1 rnd St-st with

lt.grey-melange/natural melange.

Change to 3.5 mm circular ndl and work (4) 4 (5) 5 (6) 6 cm ribbing k1, p1 in rnds.

Cast off suitable firm.

Sleeves:

Transfer sts from spare ndl to 4 mm double pointed ndls and cast on (8) 8 (8) 8 (10) 10 new underarm sts = (46) 50 (54) 56 (60) 64 sts.

Insert marker at middle underarm.

(2) 4 yrs:

Work diagram **B**.

All sizes:

Cont St-st in rnds, **at the same time** dec 1 st at each side of marker as follows: k2tog tbl after marker, and k2tog before marker.

Rep dec every (3) 4 (3) 3 (3½) 3 cm until (36) 40 (40) 40 (44) 44 sts rem.

Cont until sleeve meas approx (17) 21 (23) 27 (30) 34 cm.

Work diagram **C**.

Work 1 rnd St-st with

lt.grey-melange/natural melange.

Change to 3.5 mm double pointed ndls and work 4 cm ribbing k1, p1 in rnds.

Cast off rib-wise suitably firm.

Work other sleeve the same.

Finishing:

Sew underarm openings.

