



No 9

NANCY ROMPER

Romper w/round yoke worked from neck down

Instruction: Sandnes Garn

Sizes:

(2-3) 4-5 (6) yrs

Measurements:

Chest width: (71) 74 (77) cm

Length: approx (77) 88 (99) cm, from after neckband

Leg length: (34) 41 (48) cm, or suitable length

Sleeve length: (23) 26 (29) cm, or suitable length

All measurements are for the finished garment = personal body measurements + movement allowance. The measurements are all according to given tension.

Yarn:

SMART (100 % wool, superwash, 50 g = 100 m)

Alternative yarn:

PEER GYNT, ALPAKKA, DUO, MANDARIN MEDI, MERINOULL

Note: If alternative yarn is chosen be sure to check the yardage on label. The image of garment might change by using alternative yarn

Yarn required:

Dk.grey melange #1053: (8) 9 (10) balls

Terracotta melange #3846: 1 ball all sizes

Natural #2641: (1) 2 (2) balls

Lt.sea green #7721: 1 ball all sizes

Notions:

(7) 8 (9) buttons

Suggested knitting needles:

Circular and double pointed 3.5 mm and 4 mm

Needle sizes are only suggestions. If your knitting shows tighter tension, use thicker needles, for looser tension use thinner needle.

Tension:

20 sts St-st with 4 mm ndls = 10 cm

Edge st: k every row

Beg at neck:

With dk.grey melange and 3.5 mm circular ndl cast on (85) 91 (97) sts, and work 3 cm ribbing back and forth as follows: (first row = WS) 1 edge st, p1, *k1, p1*, rep from *-* end with 1 edge st.

Change to 4 mm circular ndl, k 1 rnd, **while** cast on 5 new sts at end of row (= cutting sts). These sts are not included in diagram or given number of sts.

Work diagram **A**, and inc as shown in **diagram** = (197) 211 (225) sts.

Divide work in this manner:

Work (29) 31 (32) sts (front), transfer (38) 42 (46) sts to spare ndl for sleeve, cast on (8) 8 (8) new underarm sts, work (63) 65 (69) sts (= the back), transfer (38) 42 (46) sts to spare ndl for sleeve, cast on (8) 8 (8) new underarm sts, work (29) 31 (32) sts (= front).

Back and front:

= (137) 143 (149) sts.

Join and work diagram **B** in rnds.

Change to dk.grey melange and work St-st until garment meas approx (25) 29 (33) cm, from dividing rnd.

Cast off cutting sts, and cast on 5 new sts = (142) 148 (154) sts on rnd.

Work 3 cm St-st in rnds.

Cast off the (3) 2 (3) center front and center back sts, and work each leg separately.

Leg:

= (68) 72 (74) sts.

Transfer sts to 4 mm double pointed ndls and work 3 cm St-st in rnds.

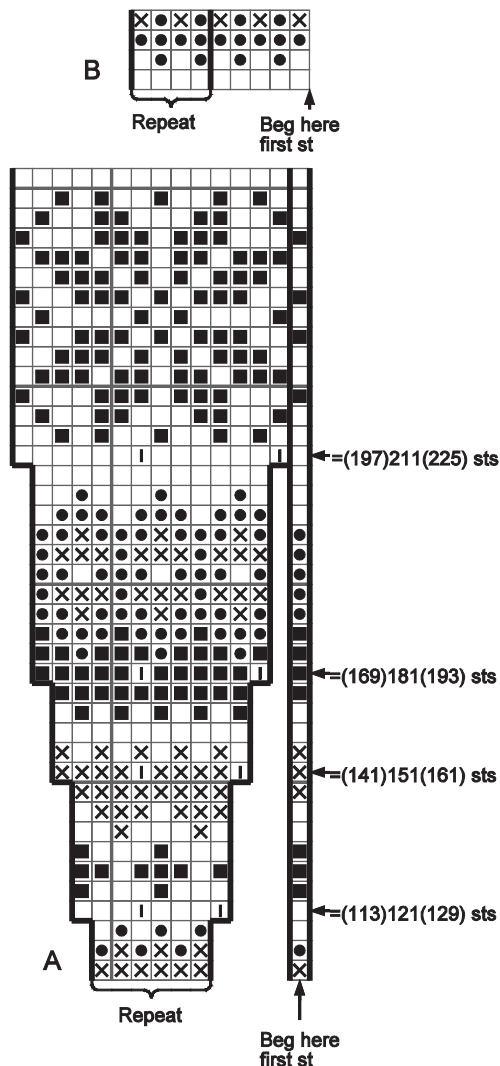
Insert marker on first and last st on rnd.

Dec 1 st at each side of marker as follows: k2tog before marker, and k2tog tbl after marker.

Rep dec every (2½) 3 (4) cm until (48) 50 (52) sts rem.

Cont until leg meas (29) 35 (42) cm, or (5) 6 (6) cm before suitable length.

Change to 3.5 mm double pointed ndls and work (5) 6 (6) cm ribbing k1, p1 in rnds.



Cast off rib-wise suitably firm.
Work other leg the same.

Sleeves:

Transfer sleeve sts to 4 mm double pointed ndls and cast on (8) 8 (8) new underarm sts = (46) 50 (54) sts on rnd.

Insert marker at middle underarm.

Work diagram **B**.

Change to dk.grey melange and cont St-st in rnds, **at the same time** dec 1 st at each side of marker as follows: k2tog tbl after marker and k2tog before marker.

Rep dec every (3½) 3 (3) cm until (36) 38 (40) sts on rnd.

Cont until sleeve meas approx (19) 22 (25) cm, or approx 4 cm before suitable length.

Change to 3.5 mm double pointed ndls and work 4 cm ribbing k1, p1 in rnds.

Cast off rib-wise suitably firm.

Work other sleeve the same

.

Finishing:

With machine sew 2 seams at each side of center front on cutting sts. Cut between.

Zig zag cut edges.

TIPS: Work front bands and facings before cutting at center front.

Front band:

Left front band girl/right front band boy:

With dk.grey melange and 3.5 mm circular ndl knit up approx 1 st every st/row, but skip every 4th st/row to approx. (91) 95 (99) sts.

Number of sts a multiple of 2+1.

Work 2 cm ribbing back and forth as neckband.

Cast off rib-wise.

Work other front band the same but with (7) 8 (9) buttonholes evenly spaced after 1 cm.

Buttonhole: K2tog, 1 yo

Facing:

From WS, with dk.grey melange and 4 mm ndls knit up 1 st every st of front band. Work 4 rows St-st back and forth. Cast off. Fold facing over cut edge and sew nicely with hidden sts.

Sew tog at crotch

Overlap front bands and sew from WS. Sew on buttons.

