





No 11

# RAGLAN SWEATER

Raglan sweater w/pattern  
Instruction: Anita Brathetland

## Sizes:

(2) 4 (6) 8 (10) 12 yrs

## Measurements:

Chest width: (63) 69 (72) 75 (81) 87 cm

Length: approx (36) 40 (44) 48 (50) 52 cm

Sleeve length: (23) 26 (29) 32 (35) 40 cm, or suitable length

All measurements are for the finished garment = personal body measurements + movement allowance. The measurements are all according to given tension.

## Yarn:

SMART (100 % wool, superwash, 50 g = 100 m)

## Alternative yarn:

PEER GYNT, ALPAKKA, DUO, MANDARIN MEDI, MERINOULL

Note: If alternative yarn is chosen be sure to check the yardage on label. The image of garment might change by using alternative yarn

## Yarn required:

Blue #5846: (2) 2 (2) 2 (3) 3 balls

Burnt ochre #2544: (3) 4 (5) 6 (7) 8 balls

Natural melange #2641: 1 ball all sizes

## Suggested knitting needles:

Circular and double pointed 3.5 mm and 4 mm

Needle sizes are only suggestions. If your knitting shows tighter tension, use thicker needles, for looser tension use thinner needle.

## Tension:

20 sts St-st with 4 mm ndls 4 = 10 cm

## Back and front:

With blue and 3.5 mm circular ndl cast on (138) 150 (158) 164 (178) 190 sts. Join and work (3) 3 (3) 4 (4) 4 cm ribbing k1, p1 in rnds.

Change to 4 mm circular ndl, k 1 rnd **while** dec (12) 12 (14) 14 (16) 16 sts evenly spaced = (126) 138 (144) 150 (162) 174 sts on rnd.

Insert marker at sides with (63) 69 (72) 75 (81) 87 sts for each part.

Work **diagram**.

Cont with burnt ochre until garment meas (22) 25 (27) 30 (31) 31 cm.

Cast off 8 sts at each side for armholes (= 4 sts at each side of markers).

Put garment aside and work sleeves.

## Sleeves:

With blue and 3.5 mm double pointed ndls cast on (32) 34 (36) 38 (40) 42 sts. Join and work (3) 3 (3) 4 (4) 4 cm ribbing k1, p1 in rnds.

Change to burnt ochre and 4 mm double pointed ndls.

Insert marker on first and last st of rnd.

Cont St-st and when sleeve meas 5 cm inc 1 st at each side of marker.

Rep inc approx. every (2) 2 (2) 2½ (2½) 2½ cm until (48) 52 (56) 60 (64) 68 sts on rnd.

Cont until sleeve meas (23) 26 (29) 32 (35) 40 cm, or suitable length.

Cast off 8 middle underarm sts (= marked sts + 3 sts at each side).

Put aside and work other sleeve the same.

## Raglan.

Transfer sleeve sts to the circular 4 mm garment ndl, placing one sleeve above each armhole cast-off = (190) 210 (224) 238 (258) 278 sts.

Rnd beg at at junction on the back.

K 1 rnd, **at the same time** k2tog at each junction, and insert marker on each of these sts = (186) 206 (220) 234 (254) 274 sts and 4 markers.

Dec for raglan at each marker as follows:

Work until 1 st before marker, sl 2 k-wise (as working k2tog), k1, psso.

Rep dec on alt rnds (9) 11 (12) 14 (15) 17 times = (114) 118 (124) 122 (134) 138 sts on rnd.

Transfer the (9) 11 (12) 13 (15) 17 middle front sts to spare ndl for neck.

Cut yarn and beg again at neck.

Cont St-st back and forth, and cast off 2 sts at beg of every row, **at the same time** cont raglan dec where possible 6 times more and a total of (15) 17 (18) 20 (21) 23 times over sts for the back.

**NOTE:** Dec for raglan on RS rows.

Leave rem sts on ndl for neck.

## Finishing:

Sew underarm openings.

## Neckband:

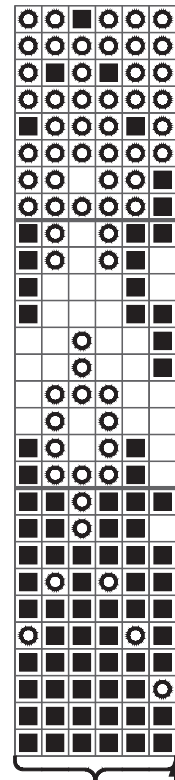
Transfer sts at neck to 3.5 mm circular ndl, and with blue knit up sts at edge.

K 1 rnd **while** adjusting number of sts to (84) 88 (92) 96 (100) 104.

Work 6 cm ribbing k1, p1 in rnds.

Cast off rib-wise.

Fold neckband double to WS and sew with hidden sts.



Repeat      Begin here

□ Natural melange  
● Burnt ochre  
■ Blue