





No 8

# SETESDAL CARDIGAN

*Setesdal cardigan w/set in sleeves*  
*Instruction: Sandnes Garn*

## Sizes:

(1-2) 3-4 (5-6) 8 (10) 12 yrs

## Measurements:

Chest width: (62) 68 (73) 79 (84) 90 cm

Length: approx (38) 42 (46) 50 (52) 54 cm

Sleeve length: approx (25) 29 (32) 35 (38) 40 cm, or suitable length

All measurements are for the finished garment = personal body measurements + movement allowance. The measurements are all according to given tension

## Yarn:

SMART (100 % wool, superwash,  
50 g = 100 m)

## Alternative yarn:

PEER GYNT, ALPAKKA, DUO,  
MANDARIN MEDI, MERINOULL,  
SPØT

Note: If alternative yarn is chosen be sure to check the yardage on label. The image of garment might change by using alternate yarn.

## Yarn required:

Putty #1015/ Green #8264: (4) 5 (6) 7 (8) 9 balls

Burnt terracotta #4036/ Orange #3316: (2) 2 (3) 3 (3) 4 balls

## Notions:

(6) 7 (8) 8 (9) 9 buttons

## Suggested knitting needles:

Circular and double pointed ndls 3 mm and 3.5 mm

Needle sizes are only suggestions. If your knitting shows tighter tension, use thicker needles, for looser tension use thinner needle

## Tension:

22 sts St-st with 3.5 mm ndls = 10 cm

## Edge st: k every row

## Back and front:

With putty/ green and 3 mm circular ndl cast on (147) 159 (173) 185 (199) 213 sts and work (3) 3 (3) 4 (4) 4 cm ribbing back and forth as follows: [1st

row = WS] 1 edge st, p1, \*k1, p1\*, rep \*-\*, end with 1 edge st.

Change to 3.5 mm circular ndl, work 1 row St-st and **at the same time** dec (14) 14 (16) 16 (18) 20 sts evenly spaced = (133) 145 (157) 169 (181) 193 sts.

Cast on 5 cutting sts at end of row, join and cont in rnds. [Cutting sts are not included in pattern or given number of sts].

Insert marker at sides with (32) 35 (38) 41 (44) 47 sts for each front and (69) 75 (81) 87 (93) 99 sts for the back.

Work diagram **A**. Then diagram **B**, and repeat this until work meas

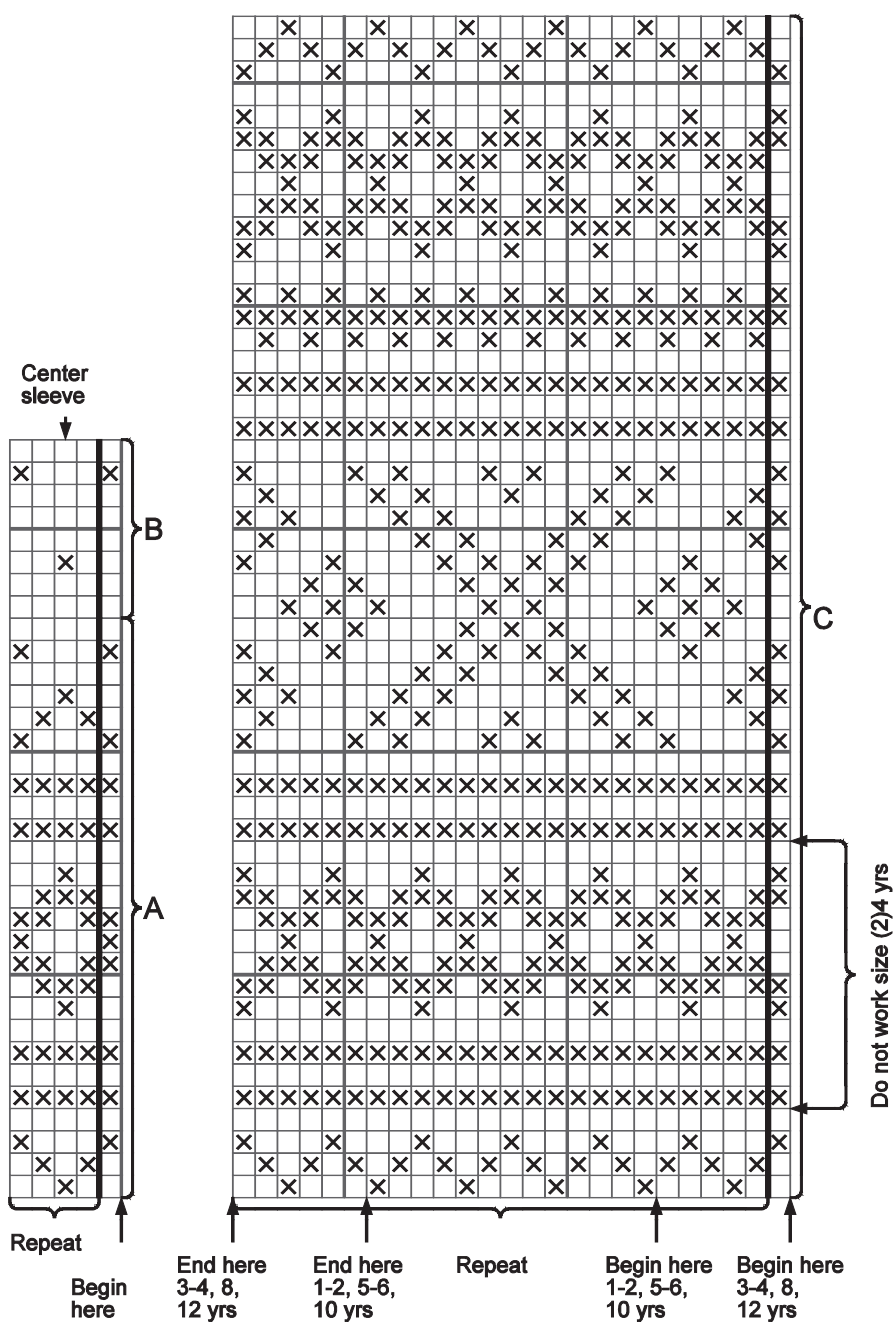
approx (24) 28 (28) 32 (34) 36 cm, ending with a half or full pattern repeat + 2 rnds main color.

Work diagram **C**, beg at arrow for chosen size and **at the same time** when work meas (33) 37 (41) 45 (47) 49 cm, cast off the (13) 15 (17) 17 (19) 19 center front sts [included cutting sts] for neck.

Cont with diagram **C** back and forth, **at the same time** cast off for neck at beg of every row 3 sts once, 2 sts once, 1 st twice at each side.

☐ Putty/ Green

☒ Burnt terracotta/ Orange



When diagram **C** is finished, work meas now approx (38) 42 (46) 50 (52) 54 cm.

Cast off (111) 121 (131) 143 (153) 165 rem sts.

#### **Sleeves:**

With putty/ green and 3 mm double pointed ndls cast on (36) 36 (40) 40 (44) 44 sts. Join and work (4) 4 (4) 5 (5) 5 cm ribbing k1, p1 in rnds.

NOTE: Read through following chapter before knitting:

Change to 3.5 mm double pointed ndls and insert marker on first st on rnd. Count from center of sleeve to establish beg of pattern and work diagram **A**, **at the same time** when work meas (5) 5 (5) 6 (6) 6 cm inc 1 st at each side of marker.

Rep inc every (2,5) 3 (3) 2,5 (3,5) 3 cm until (50) 52 (56) 60 (62) 66 sts on rnd.

After diagram **A** cont with diagram **B** until work meas approx (18) 22 (25) 28 (31) 33 cm, or approx 7 cm before suitable length, ending with a half or full pattern repeat + 2 rnds main color.

Work the first 20 rnds of diagram **A**.

Work meas now approx (25) 29 (32) 35 (38) 40 cm.

Turn sleeve inside out and work 5 rows St-st back and forth for facing. Cast off.

Work other sleeve the same.

#### **Finishing:**

Measure top of sleeve and insert marker at each side for depth of armholes. With machine sew 2 seams at each side on center front cutting sts and 2 seams at each side for armhole openings. Cut between seams. Zigzag cut edges.

**TIPS:** Work front bands and facings before cutting at center front.

Sew shoulder seams.

Sew in sleeves. Fold facings over cut edge and sew loosely with invisible sts.

#### **Front band:**

**Left front band girl/right front band boy.**

With putty/ green and 3 mm circ ndl pick up and knit 1 st every st/row but skip every 4th st/row to approx (75) 79 (83) 87 (91) 95 sts. Number of sts a multiple of 2+1.

Work approx 2 cm ribbing back and forth as for back and front.

Cast off rib-wise.

Work other front band in the same manner, but with (6) 7 (8) 8 (9) 9 buttonholes evenly spaced. The lower approx 2 cm from edge, the upper at center of neckband. This is done later.

Buttonhole: k/p 2tog, 1 yo.

#### **Neckband:**

With putty/ green and 3 mm circ ndl pick up and knit approx 1 st every st/row, but skip every 4<sup>th</sup> st/row at neck edge to approx (81) 85 (89) 93 (97) 99 sts. Number of sts a multiple of 2+1.

Work approx 2 cm ribbing back and forth as on back and front. Remember last buttonhole.

Cast off on WS.

Sew buttons on.

#### **Facing:**

From WS pick up 1 st in each st on first row of front band. Work 4 rows St-st back and forth. Cast off.

Fold facing over cut edge and sew with invisible sts.



